

SPECIFICATIONS:

CONTACT RATING: Refer to "Contact Material Options" for more info.
 ELECTRICAL LIFE: 30,000 make-and-break cycles at full load.
 CONTACT RESISTANCE: 20mΩ max. initial @ 2-4 VDC
 100mA for both silver and gold plated contacts.
 INSULATION RESISTANCE: 1,000MΩ min.
 DIELECTRIC STRENGTH: 1,500 V RMS @ sea level.
 OPERATING TEMPERATURE: -30°C to +85°C.

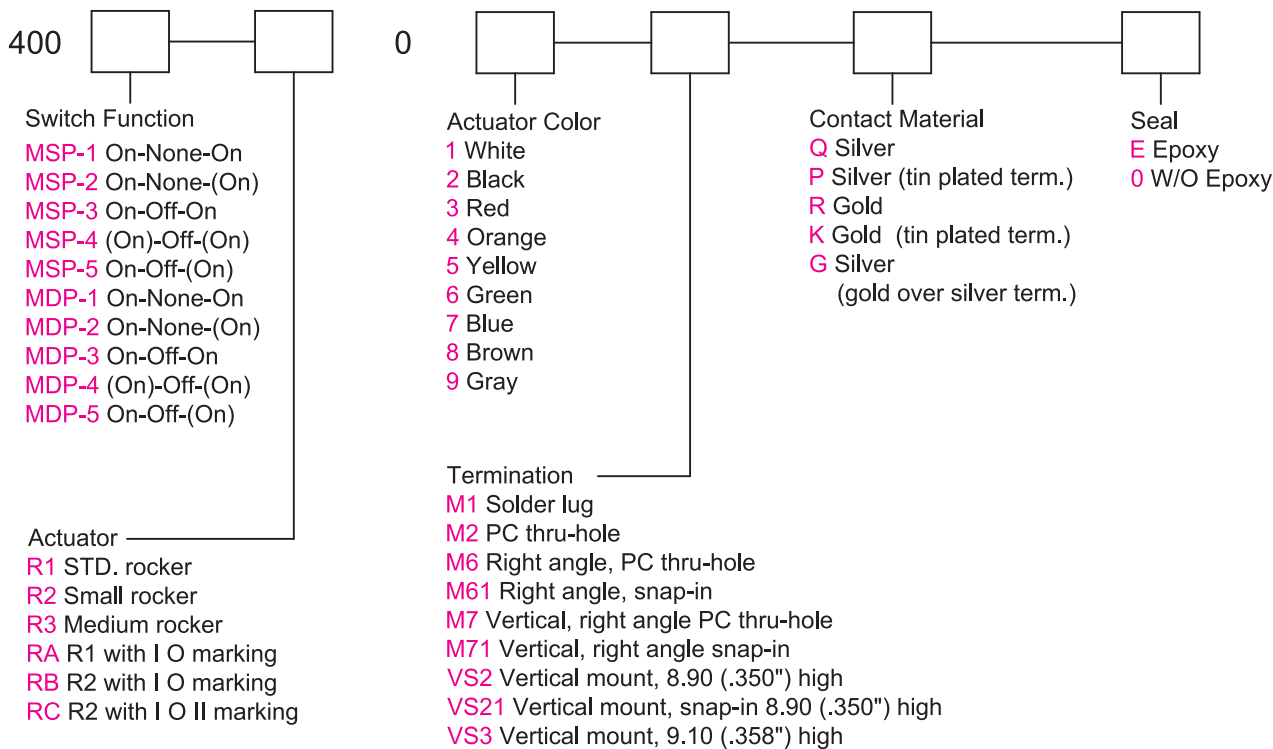
MATERIALS:

CASE: Diallyl phthalate(DAP)(UL 94V-0).
 ROCKER: Nylon 6/6 (UL 94V-0).
 BUSHING: Zinc, nickel plated.
 HOUSING: Stainless Steel.
 SWITCH SUPPORT: Brass, tin plated.
 TERMINAL SEAL: Epoxy.

Specifications and Dimensions subject to change

If your preferred product configuration is not shown, please contact our sales representative for custom design.

HOW TO ORDER SYSTEM

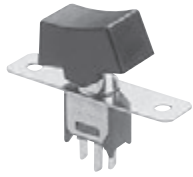


Toggle
Rocker
Slide
Pushbutton
AV
Rotary
Tact
Touch Key
Miscellaneous

Series 400

Sub-Miniature Rocker Switches

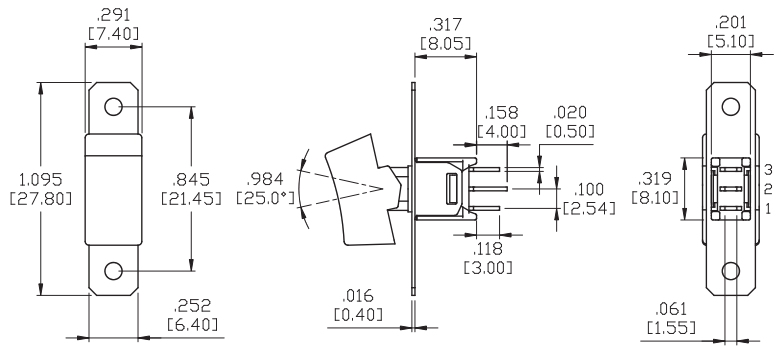
SPDT



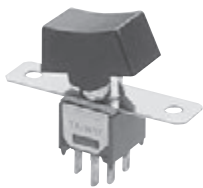
Model No.	Switching Position		
MSP-1	ON	NONE	ON
MSP-2	ON	NONE	(ON)
MSP-3	ON	OFF	ON
MSP-4	(ON)	OFF	(ON)
MSP-5	ON	OFF	(ON)
TERM. COMM.	2-3	OPEN	2-1

Schematic

2Comm.



DPDT

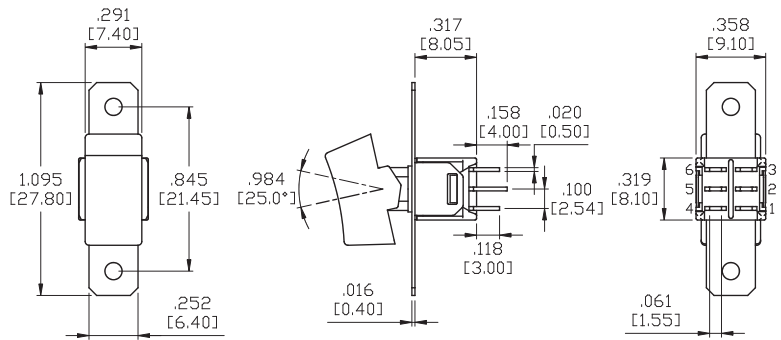


Model No.	Switching Position		
MDP-1	ON	NONE	ON
MDP-2	ON	NONE	(ON)
MDP-3	ON	OFF	ON
MDP-4	(ON)	OFF	(ON)
MDP-5	ON	OFF	(ON)
TERM. COMM.	2-3,5-6	OPEN	2-1,5-4

Schematic

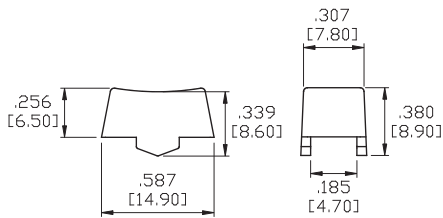
2Comm.

5Comm.

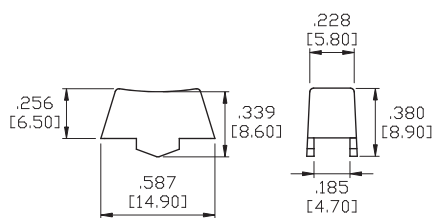


ACTUATOR OPTIONS

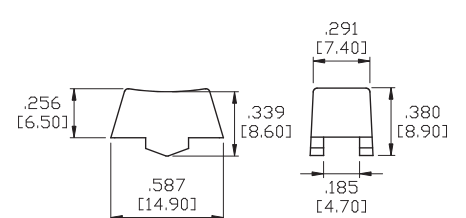
R1



R2

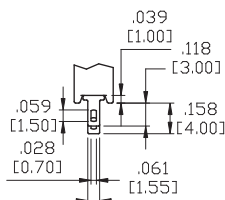


R3



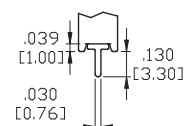
TERMINATION OPTIONS

M1 STD. SOLDER LUG

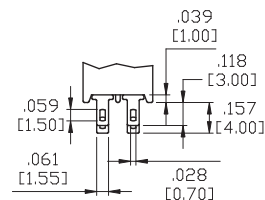


SP

M2 PC THRU-HOLE

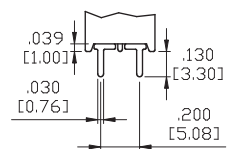


M1 STD. SOLDER LUG



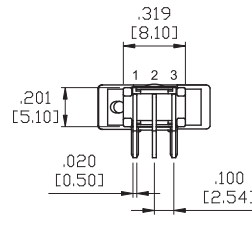
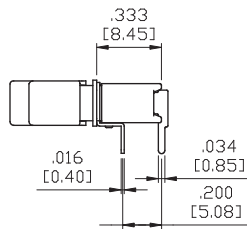
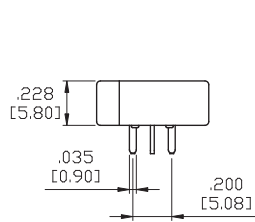
DP

M2 PC THRU-HOLE

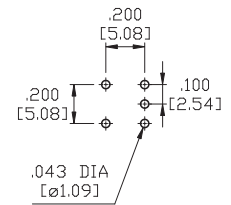


TERMINATION OPTIONS

M6

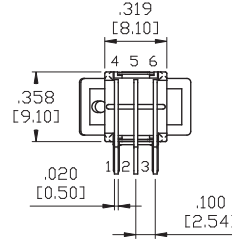
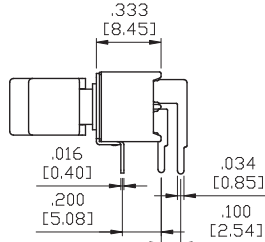
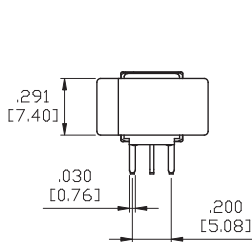
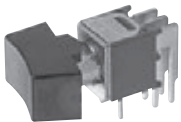


P.C.MOUNTING

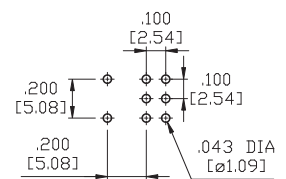


SPDT

M6

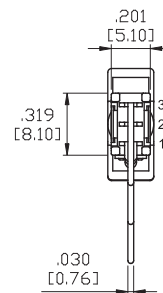
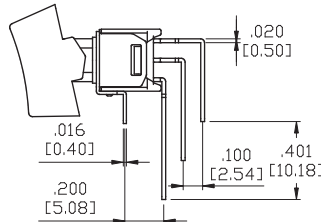
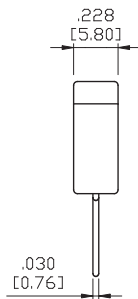
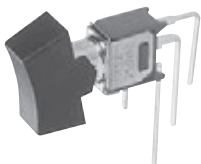


P.C.MOUNTING

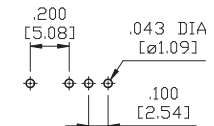


DPDT

M7

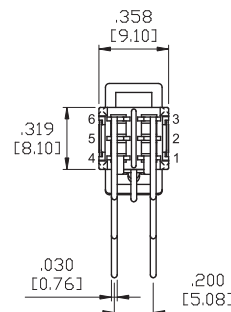
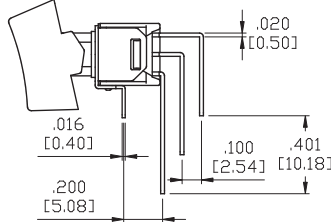
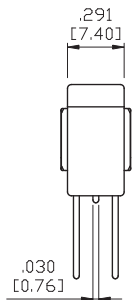
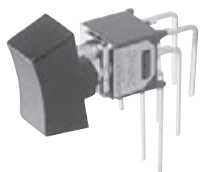


P.C.MOUNTING

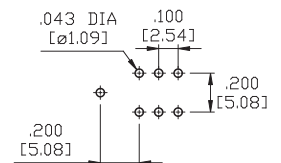


SPDT

M7

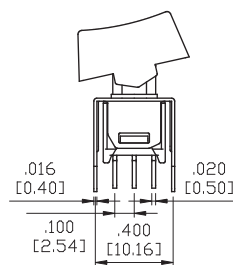
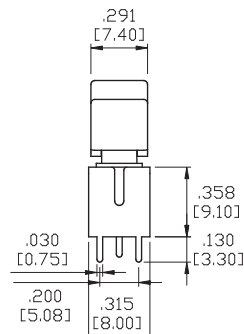
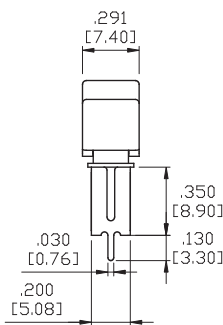


P.C.MOUNTING

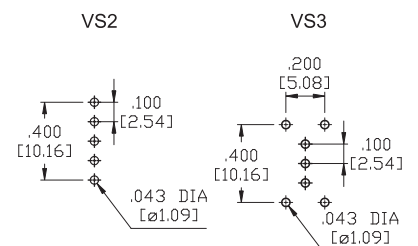


DPDT

VS2-VS3



P.C.MOUNTING



SPDT

Toggle

Rocker

Slide

Pushbutton

AV

Rotary

Tact

Touch Key

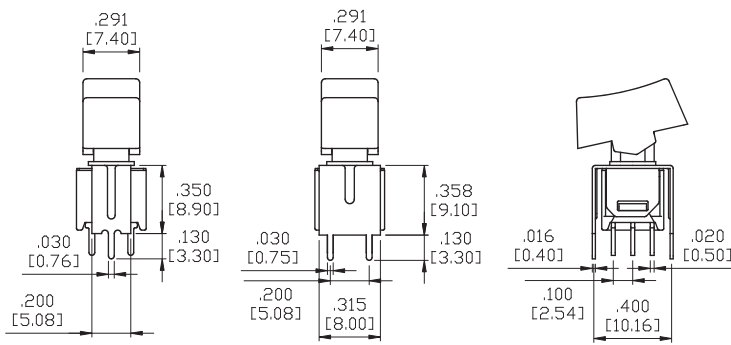
Miscellaneous

TERMINATION OPTIONS

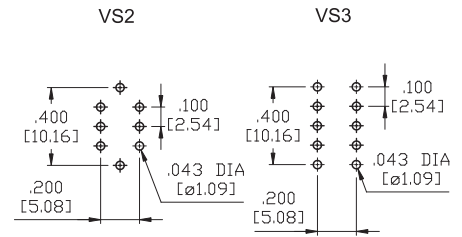
VS2-VS3



DPDT



P.C.MOUNTING

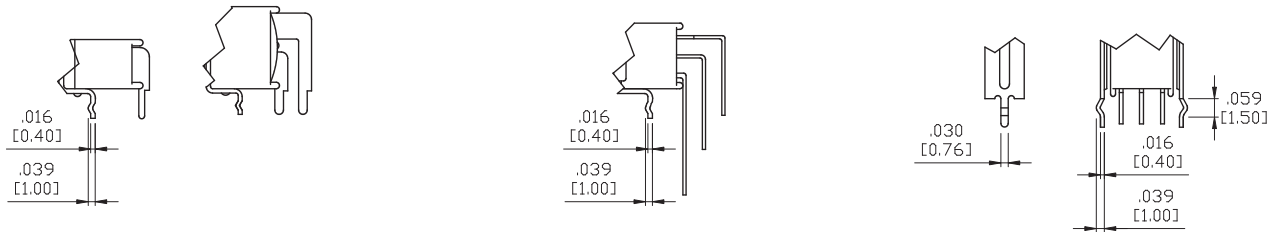


SNAP-IN TERMINATION OPTIONS

M61

M71

VS21



* PC Mounting for M61,M71,VS21 refer to M6,M7,VS2 respectively.

CONTACT MATERIAL OPTIONS

Coding	Contact Material	Terminal Plating	Rating	Agency Approvals
Q	Silver ¹	Silver plated ¹	3Amps @ 125VAC or 28VDC 1.5Amps @ 250VAC	
P		Tin plated ^{5/7}		
R	Gold ²	Gold plated ⁴	0.4VA max @ 20V max (AC or DC)	
K		Tin plated ^{5/6}		
G	Silver ¹	Gold over silver ³	3Amps @ 125VAC or 28VDC 1.5Amps @ 250VAC	

1. Movable Contact / Terminals: Copper alloy, silver plated.
2. Movable Contact: Copper alloy with gold plated over nickel plated.
3. Terminals: Silver plated with outer layer in gold plating.
4. Terminals: Copper alloy, with gold plated over nickel plated.
5. Outer Terminals: Copper alloy with pure tin plated.
6. Terminal Contact: Gold plated over nickel plated.
7. Terminal Contact: Palladium nickel alloy (or Silver) plated.

* P, K is not available with M1 terminal.