

SPECIFICATIONS:

CONTACT RATING: 3A 250VAC 6A 125VAC.
 ELECTRICAL LIFE: 10,000 Operations.
 MECHANICAL LIFE: 10,000 Operations min.
 CONTACT RESISTANCE: <20m-ohms.
 INSULATION RESISTANCE: 500VDC, 100M-ohms min.
 DIELECTRIC STRENGTHS: 1,000VAC for 1minute.

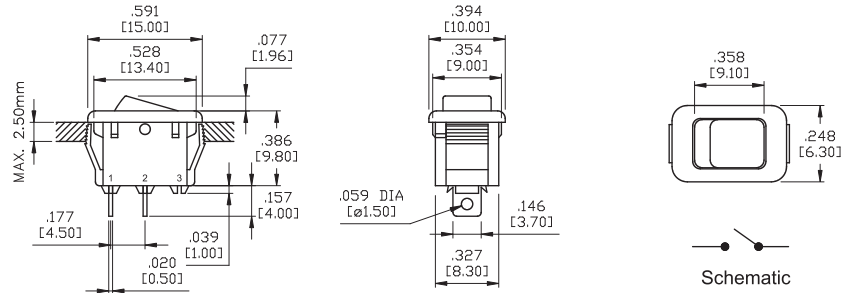
MATERIALS:

BODY: Nylon 66 (UL 94V-2).
 ACTUATOR: Nylon 66 (UL 94V-2).
 MOVABLE CONTACTS: Copper, silver plated.
 SPRING: Piano wire.
 TERMINALS: Copper, silver plated.

Specifications and Dimensions subject to change

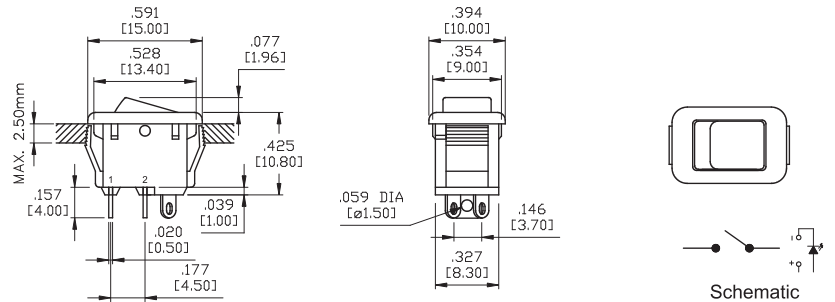


Model No.	Type
33A	ON-OFF
33B	ON-ON
33C	(ON)-OFF

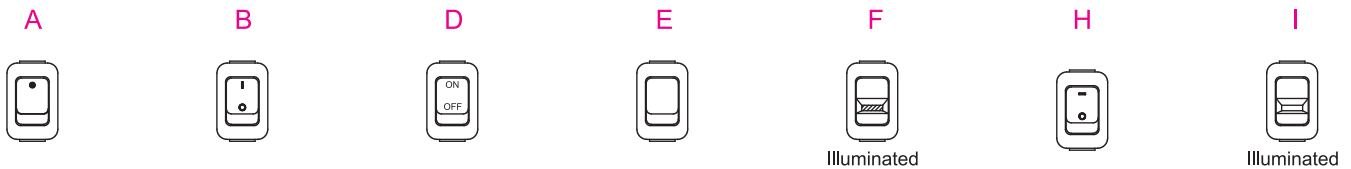


Model No.	Type
33E	ON-OFF W/LED

LED Color	
6	Red
7	Orange
8	Green

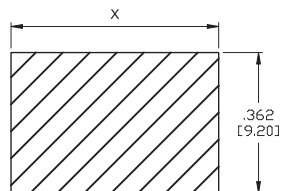


MARK OPTIONS



PANEL MOUNTING

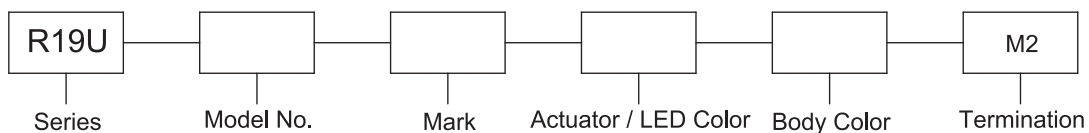
	X Cutout Dimension	Panel Thickness
A	.535 [13.60] +0.00 -0.10	0.75~1.25
B	.539 [13.70] +0.00 -0.10	1.25~2.00
C	.543 [13.80] +0.00 -0.10	2.00~2.50



COLOR OPTIONS

Actuator Color		Body Color	
1	White	A	White
2	Black (Std.)	B	Black
3	Gray	C	Gray
6	Red		

HOW TO ORDER



Series R19U

Ultraminiature Power Rocker Switches

SPECIFICATIONS:

CONTACT RATING: 3A 250VAC 6A 125VAC.
 ELECTRICAL LIFE: 10,000 Operations.
 MECHANICAL LIFE: 10,000 Operations min.
 CONTACT RESISTANCE: <20m-ohms.
 INSULATION RESISTANCE: 500VDC, 100M-ohms min.
 DIELECTRIC STRENGTHS: 1,000VAC for 1minute.

MATERIALS:

BODY: Nylon 66 (UL 94V-2).
 ACTUATOR: Nylon 66 (UL 94V-2).
 MOVABLE CONTACTS: Copper, silver plated.
 SPRING: Piano wire.
 TERMINALS: Copper, silver plated.

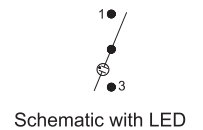
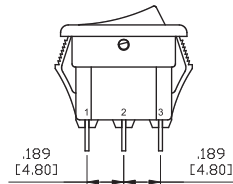
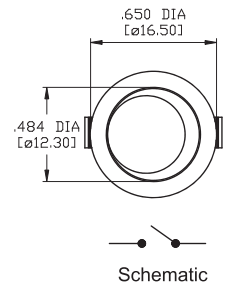
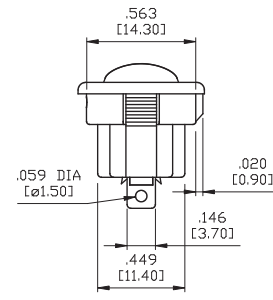
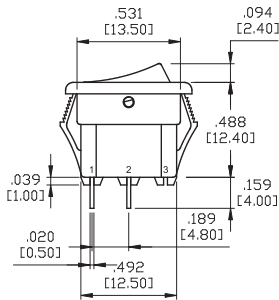
Specifications and Dimensions subject to change



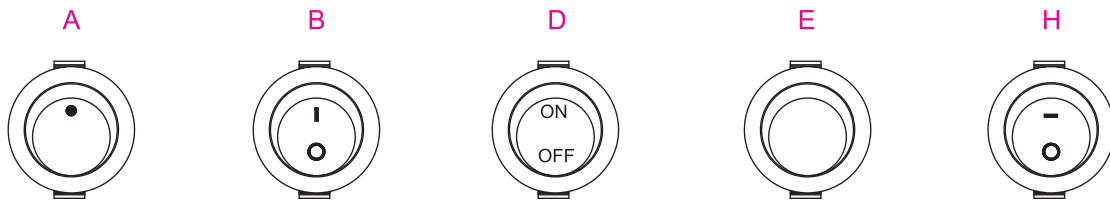
Model No.	Type
R112	ON-ON
R112A	ON-OFF
R112B	ON-OFF W/LED

Lamp Color	
6	Red
7	Orange
8	Green

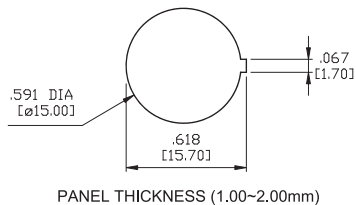
* R112B Only



MARK OPTIONS



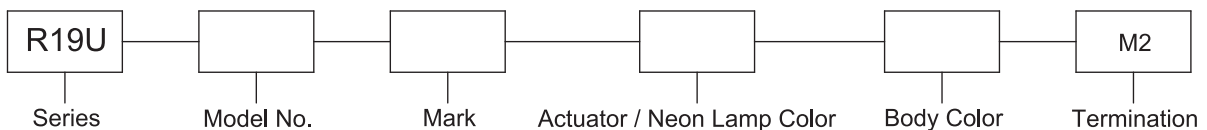
PANEL MOUNTING



COLOR OPTIONS

Actuator Color		Body Color	
1	White	A	White
2	Black (Std.)	B	Black
3	Gray	C	Gray
6	Red		

HOW TO ORDER



SPECIFICATIONS:

CONTACT RATING: 3A 250VAC/125VAC.
 ELECTRICAL LIFE: 10,000 Operations.
 MECHANICAL LIFE: 10,000 Operations min.
 CONTACT RESISTANCE: <20m-ohms.
 INSULATION RESISTANCE: 500VDC, 1000M-ohms min.
 DIELECTRIC STRENGTHS: 1,500VAC for 1minute.

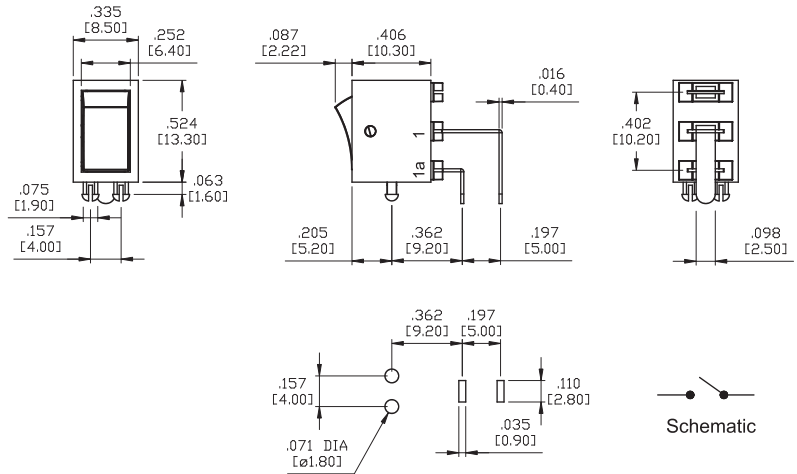
MATERIALS:

BODY: Nylon 66 (UL 94V-2).
 ACTUATOR: Nylon 66 (UL 94V-2).
 MOVABLE CONTACTS: Copper, silver plated.
 SPRING: Piano wire.
 TERMINALS: Brass, silver plated.

Specifications and Dimensions subject to change



Model No.	Type
33A	ON-OFF
33B	ON-ON

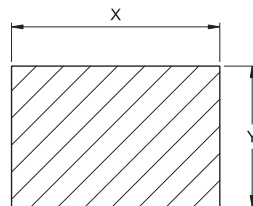


MARK OPTIONS



PANEL MOUNTING

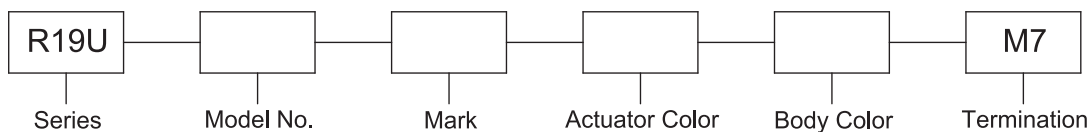
X Cutout Dimension	Y Cutout Dimension
.528-.543 [13.40-13.80]	.338-.354 [8.60-9.00]



COLOR OPTIONS

Actuator Color		Body Color	
1	White	A	White
2	Black (Std.)	B	Black
3	Gray	C	Gray
5	Yellow		
6	Red		
7	Orange		
8	Green		
9	Blue		

HOW TO ORDER



Series R19U

Ultraminiature Power Rocker Switches

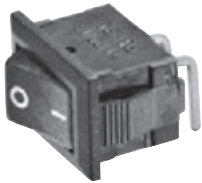
SPECIFICATIONS:

CONTACT RATING: 3A 250VAC/125VAC.
 ELECTRICAL LIFE: 10,000 Operations.
 MECHANICAL LIFE: 10,000 Operations min.
 CONTACT RESISTANCE: <50m-ohms.
 INSULATION RESISTANCE: 500VDC, 100M-ohms min.

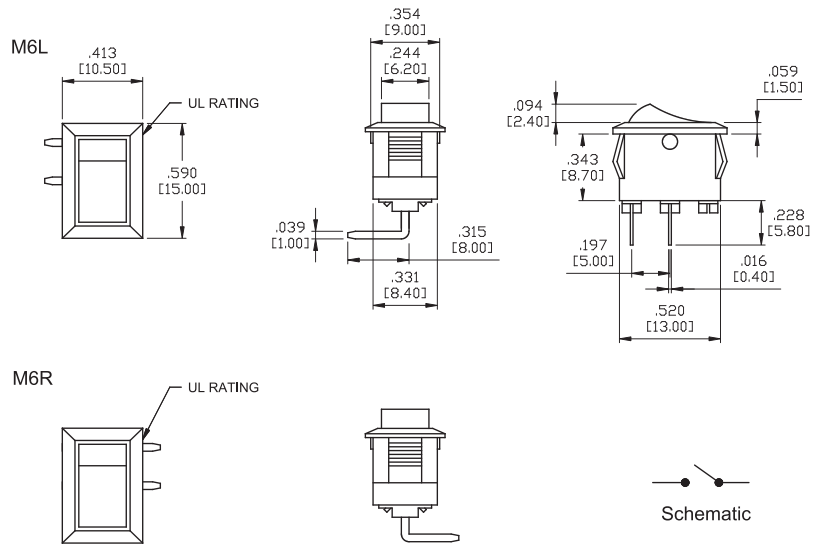
MATERIALS:

BODY: Nylon 66 (UL 94V-2).
 ACTUATOR: Nylon 66 (UL 94V-2).
 MOVABLE CONTACTS: Copper, silver plated.
 SPRING: Piano wire.
 TERMINALS: Brass, silver plated.

Specifications and Dimensions subject to change



Model No.	Type
33A	ON-OFF
33B	ON-ON

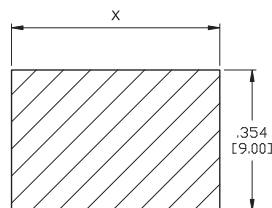


MARK OPTIONS



PANEL MOUNTING

	X Cutout Dimension	Panel Thickness
A	.547 [13.90] $\begin{matrix} +0.00 \\ -0.10 \end{matrix}$	0.75~1.25
B	.555 [14.10] $\begin{matrix} +0.00 \\ -0.10 \end{matrix}$	1.25~2.00
C	.563 [14.30] $\begin{matrix} +0.00 \\ -0.10 \end{matrix}$	2.00~3.00



COLOR OPTIONS

Actuator Color		Body Color	
1	White	A	White
2	Black (Std.)	B	Black
3	Gray	C	Gray
5	Yellow		
6	Red		
7	Orange		
8	Green		
9	Blue		

HOW TO ORDER

