

## SPECIFICATIONS:

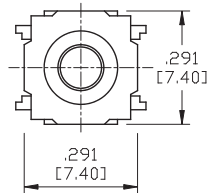
CONTACT RATING: 50mA 12VDC.  
 CONTACT RESISTANCE: 100m-ohms max.  
 TRAVEL: 0.25±0.10mm.  
 LIFE: 100,000 cycles min.  
 OPERATING FORCE: 130, 160±30, 250±50gf.

## MATERIALS:

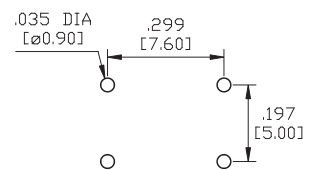
CASE & STEM: Nylon 66 G30%.  
 COVER: 0.3t electrolytic tin plate (E.T).  
 TERMINAL: 0.3t C2680R-EH.  
 C/PLETAT: 0.06t AG-C5210R-EH.  
 RUBBER: Silicon.

Specifications and Dimensions subject to change

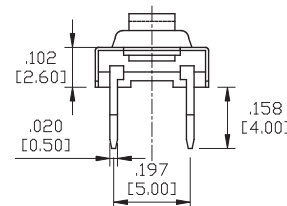
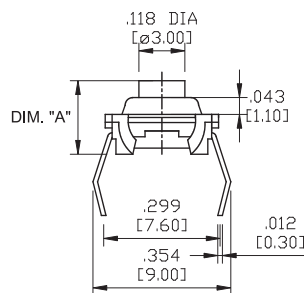
### KRSS-0712



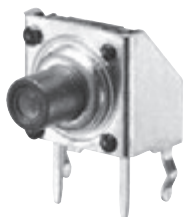
### P.C.MOUNTING



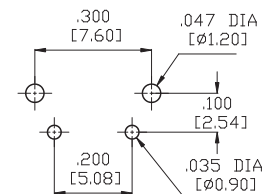
| L | DIM. "A"     |
|---|--------------|
| 1 | .185 [4.70]  |
| 2 | .205 [5.20]  |
| 3 | .272 [6.90]  |
| 4 | .394 [10.00] |



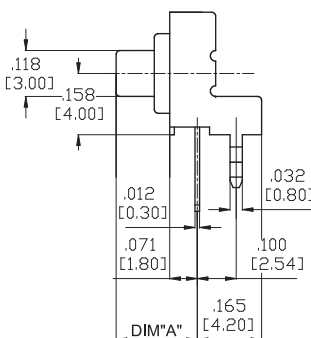
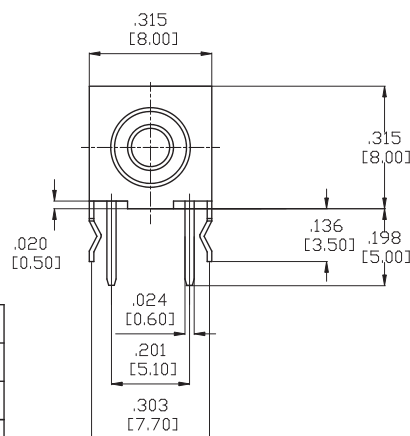
### KRSS-0714



### P.C.MOUNTING



| L | DIM. "A"    |
|---|-------------|
| 1 | .138 [3.50] |
| 2 | .158 [4.00] |
| 3 | .225 [5.70] |
| 4 | .343 [8.70] |



## HOW TO ORDER

