

## SPECIFICATIONS:

RATING: DC 3V 50uA-Dc 5V 10mA.

OPERATING TEMPERATURE: -20°C to +70°C.

OPERATING FORCE: 0.3N (31gf).

RESISTANCE TO SOLDERING HEAT: Manual soldering 300°C 3 sec.

Reflow soldering 250°C 20 sec max.

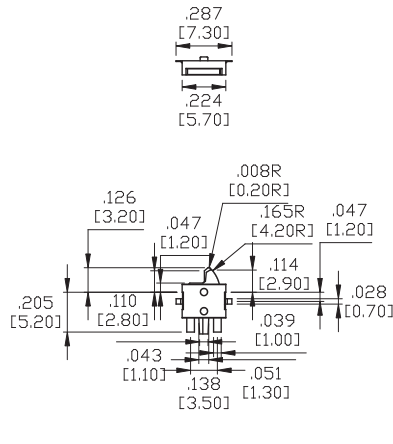
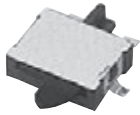
CONTACT RESISTANCE(Initial performance/ After lifetime): 500m-ohms max. /1-ohms max.

INSULATION RESISTANCE: More than 100M-ohms at 100VDC.

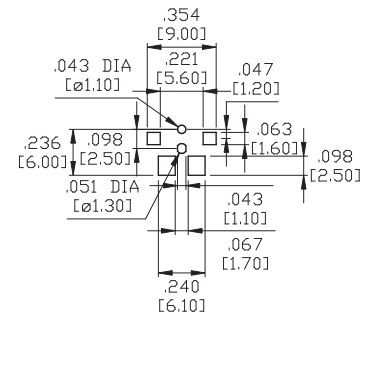
WITHSTANDING VOLTAGE: 100VAC, 1 minute.  
OPERATING LIFE(WITH LOAD): 100,000 cycles.

Specifications and Dimensions subject to change

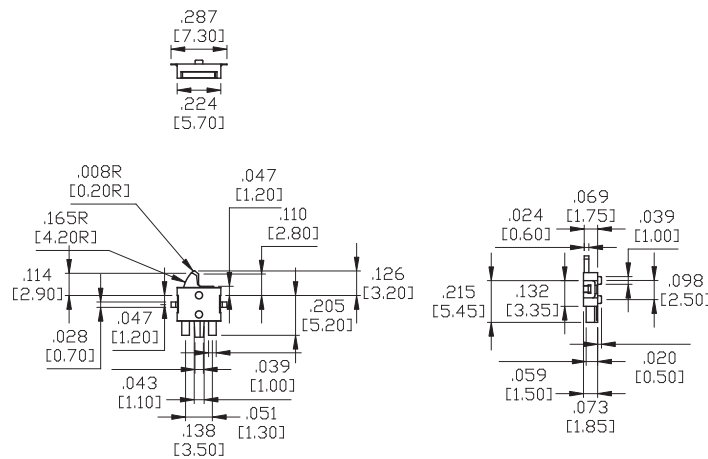
### 12MTL



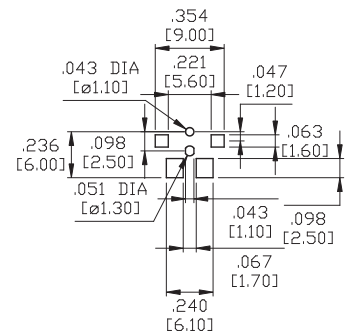
### REFLOW PATTERN



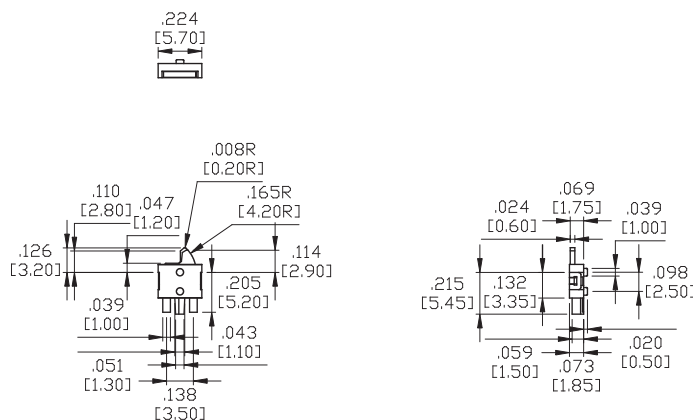
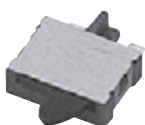
### 12MTR



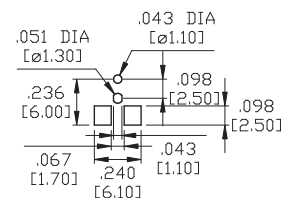
### REFLOW PATTERN



### 12NTL

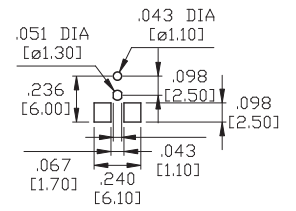
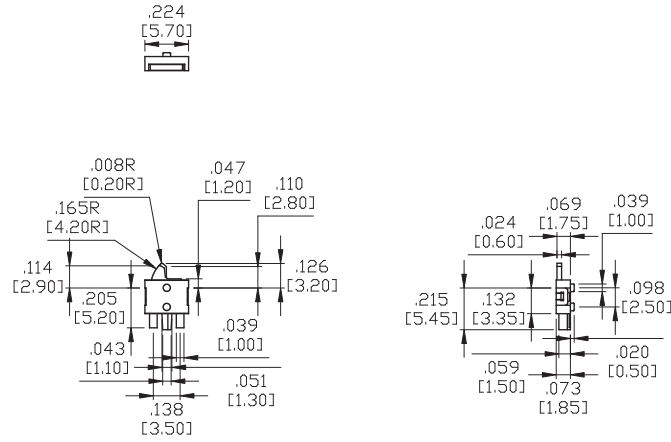


### REFLOW PATTERN

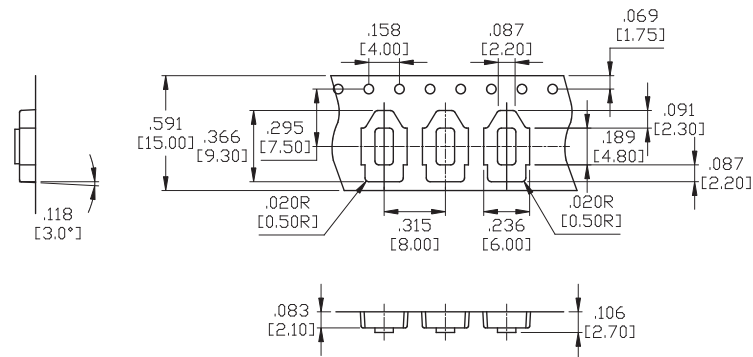


12NTR

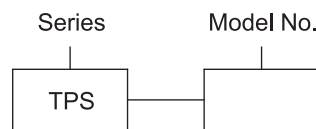
REFLOW PATTERN



## REEL TAPING



## HOW TO ORDER



Toggle

Rocker

Slide

Pushbutton

AV

Rotary

Tact

Touch Key

Miscellaneous