

SPECIFICATIONS:

CONTACT RATING: Refer to "Contact material Options" for more info.
 CONTACT RESISTANCE: 10mΩ max. initial @ 2-4VDC
 100mA for both silver and gold plated contacts.
 ELECTRICAL LIFE: 50,000 actuations at full load.
 INSULATION RESISTANCE: 1,000MΩ Min.
 DIELECTRIC STRENGTHS: 1,500V RMS @ sea level.
 OPERATION TEMPERATURE: -30°C to +85°C.

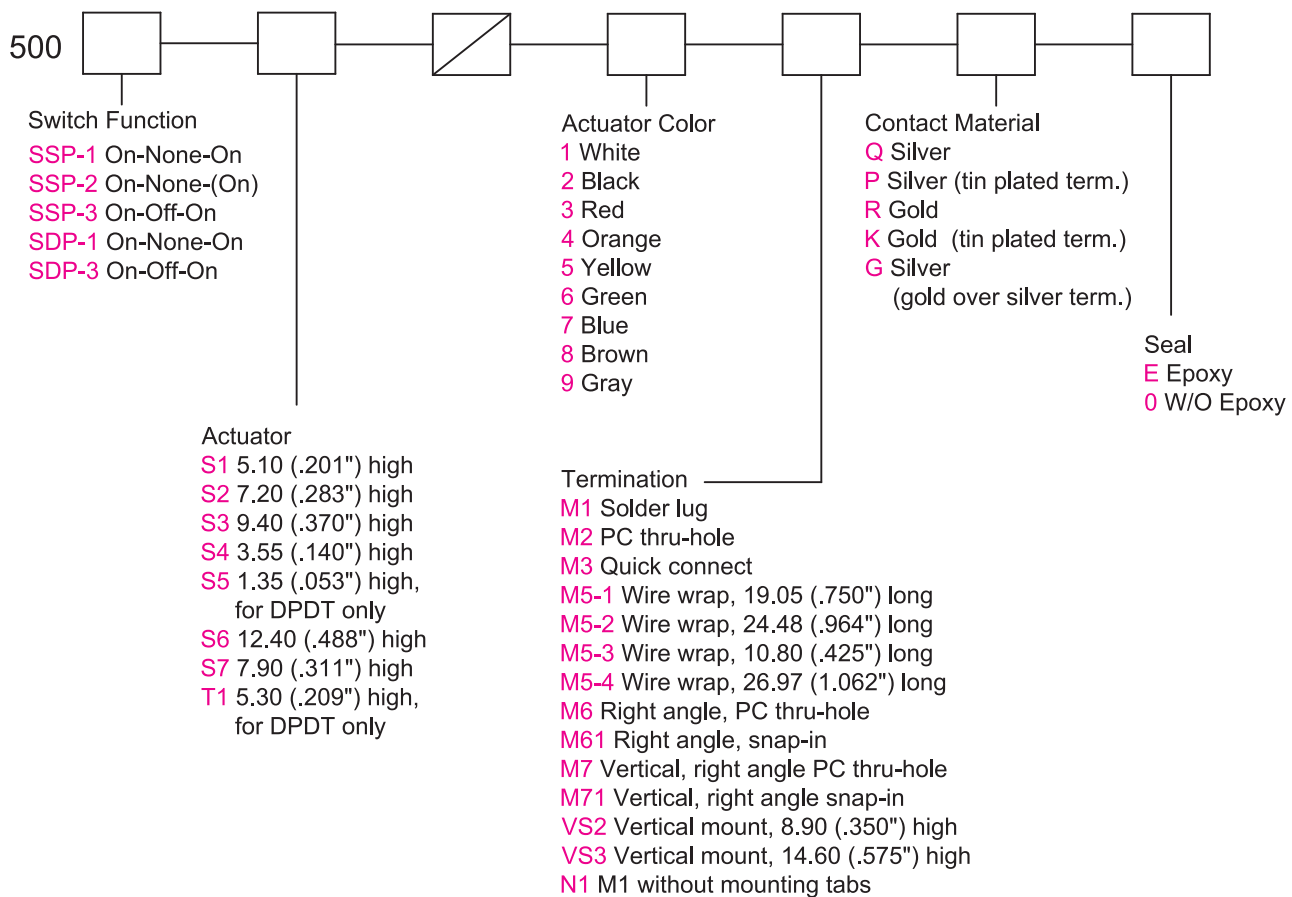
MATERIALS:

CASE: Diallyl phthalate(DAP)(UL 94V-0).
 HOUSING: Stainless Steel.
 SLIDE HANDLE: Nylon 6, black standard.
 TERMINAL SEAL: Epoxy.

Specifications and Dimensions subject to change

If your preferred product configuration is not shown, please contact our sales representative for custom design.

HOW TO ORDER SYSTEM



Toggle

Rocker

Slide

Pushbutton

AV

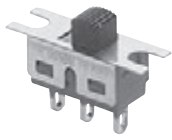
Rotary

Tact

Touch Key

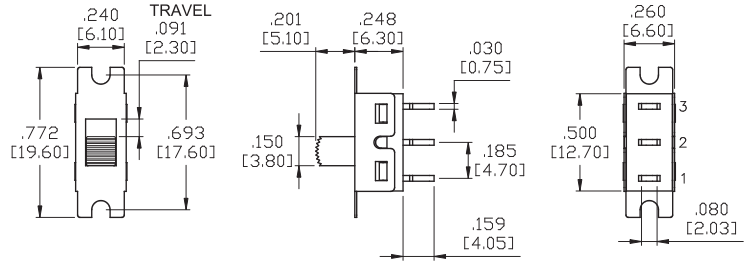
Miscellaneous

SPDT

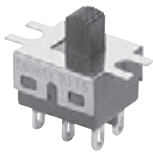


Model No.	Switching Position		
SSP-1	ON	NONE	ON
SSP-2	ON	NONE	(ON)
SSP-3	ON	OFF	ON
Term. Comm.	2-1	OPEN	2-3

Schematic

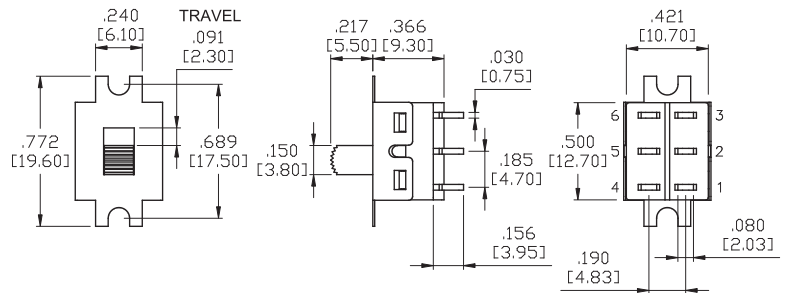
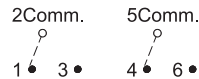


DPDT



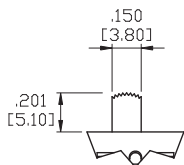
Model No.	Switching Position		
SDP-1	ON	NONE	ON
SDP-3	ON	OFF	ON
Term. Comm.	2-1 5-4	OPEN	2-3 5-6

Schematic



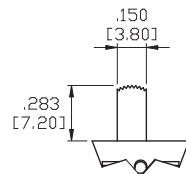
ACTUATOR OPTIONS

S1



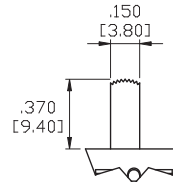
* Add 0.40 (.016) from actuator height for DPDT-M1 and M2 model.

S2



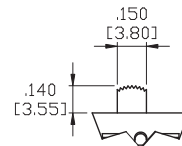
* Add 0.20 (.008) from actuator height for DPDT-M1 and M2 model.

S3



* Add 0.30 (.012) from actuator height for DPDT-M1 and M2 model.

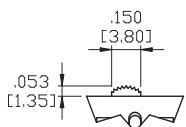
S4



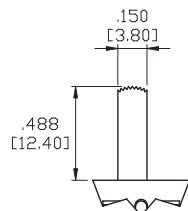
* Add 0.40 (.016) from actuator height for DPDT-M1 and M2 model.

* All actuator length shown is SPDT model with M1 and M2 terminals.

S5 FOR DPDT ONLY

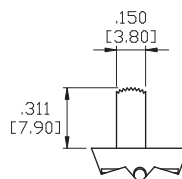


S6



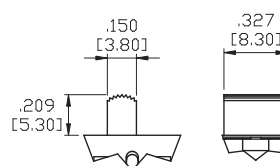
* Add 0.70 (.028) from actuator height for DPDT-M1 and M2 model.

S7



* Add 0.40 (.016) from actuator height for DPDT model.

T1 FOR DPDT ONLY



* All actuator length shown is SPDT model with M1 and M2 terminals.

ACTUATOR COLORS	
1	White
2	Black (Std.)
3	Red
4	Orange
5	Yellow
6	Green
7	Blue
8	Brown
9	Gray

TERMINATION OPTIONS

<p>M1 STD. SOLDER LUG</p> <p>THK .030 [0.75]</p> <p>* Standard with Mounting Tabs.</p>	<p>M2 PC THRU-HOLE</p> <p>THK .030 [0.75]</p>	<p>M3 QUICK CONNECT</p> <p>THK .030 [0.75]</p>	<p>M5 WIRE WRAP</p> <p>THK .030 [0.75]</p> <table border="1"> <thead> <tr> <th>OPTION CODE</th> <th>DIM.'A'</th> </tr> </thead> <tbody> <tr> <td>M5-1</td> <td>.750 [19.05]</td> </tr> <tr> <td>M5-2</td> <td>.964 [24.48]</td> </tr> <tr> <td>M5-3</td> <td>.425 [10.80]</td> </tr> <tr> <td>M5-4</td> <td>1.062 [26.97]</td> </tr> </tbody> </table>	OPTION CODE	DIM.'A'	M5-1	.750 [19.05]	M5-2	.964 [24.48]	M5-3	.425 [10.80]	M5-4	1.062 [26.97]
OPTION CODE	DIM.'A'												
M5-1	.750 [19.05]												
M5-2	.964 [24.48]												
M5-3	.425 [10.80]												
M5-4	1.062 [26.97]												

TERMINATION OPTIONS WITHOUT MOUNTING TABS

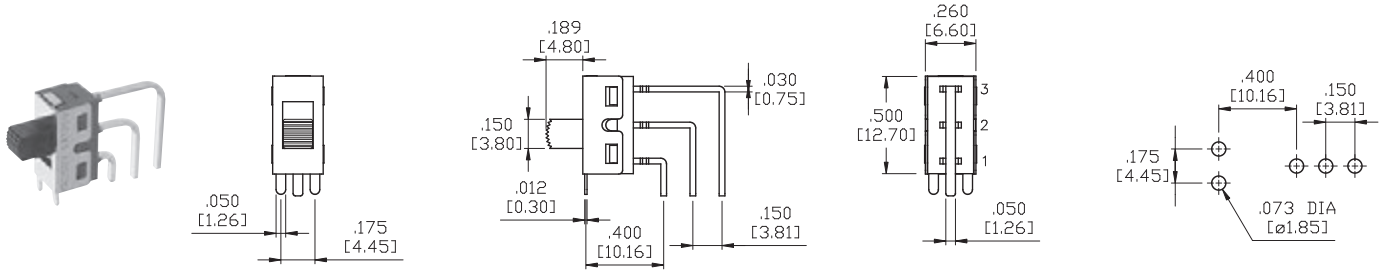
<p>N1</p> <p>SPDT</p>				
<p>N1</p> <p>DPDT</p>				
<p>M6</p> <p>SPDT</p>				<p>P.C.MOUNTING</p>
<p>M6</p> <p>DPDT</p>				<p>P.C.MOUNTING</p>

Toggle
Rocker
Slide
Pushbutton
AV
Rotary
Tact
Touch Key
Miscellaneous

TERMINATION OPTIONS WITHOUT MOUNTING TABS

M7

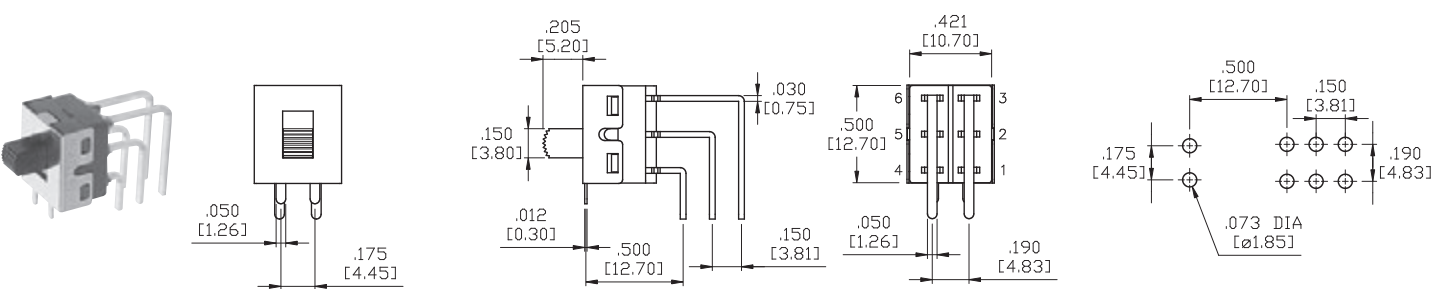
P.C.MOUNTING



SPDT

M7

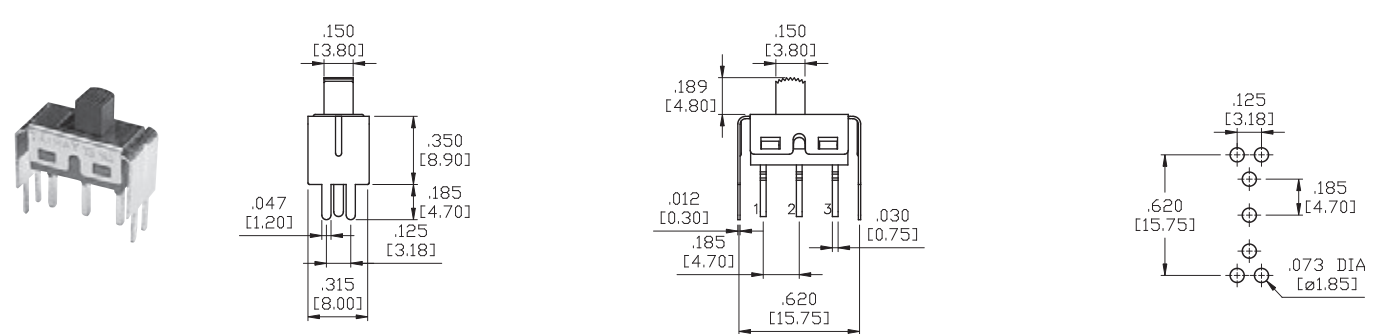
P.C.MOUNTING



DPDT

VS-2

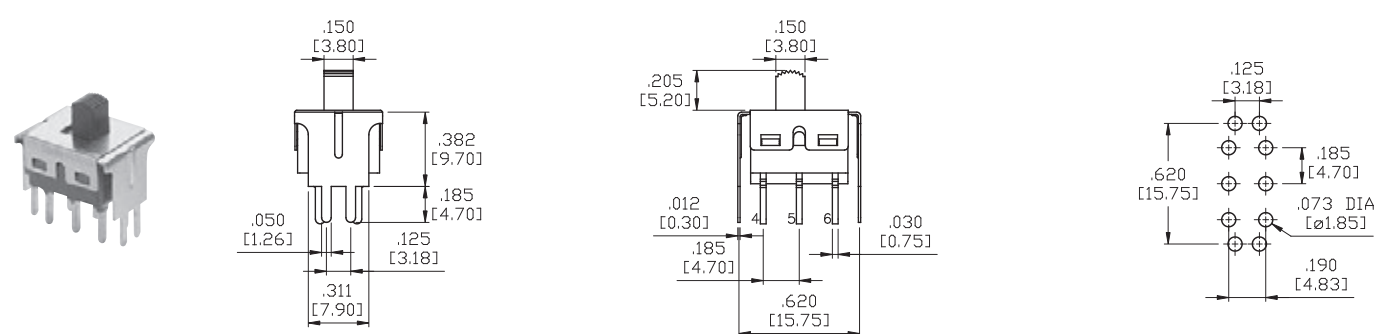
P.C.MOUNTING



SPDT

VS-2

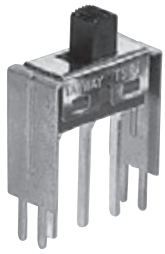
P.C.MOUNTING



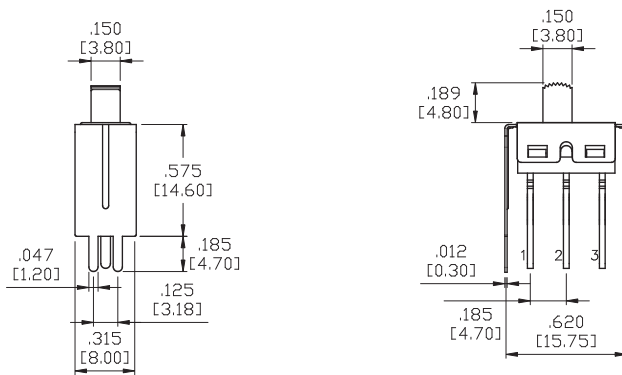
DPDT

TERMINATION OPTIONS WITHOUT MOUNTING TABS

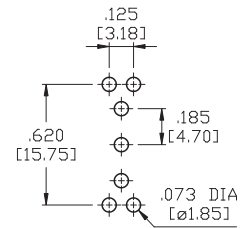
VS-3



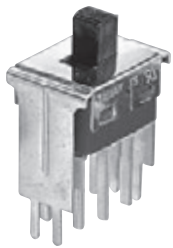
SPDT



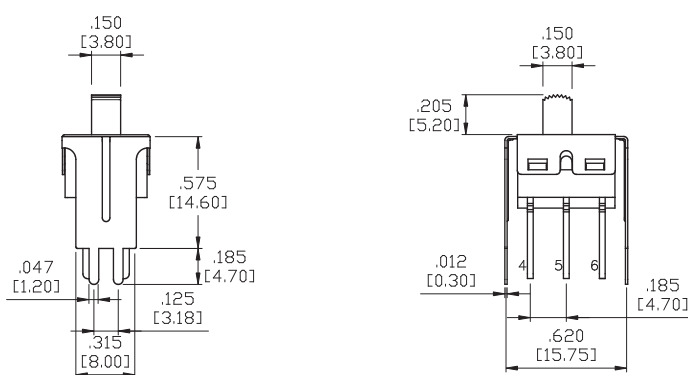
P.C.MOUNTING



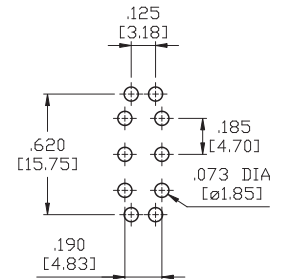
VS-3



DPDT



P.C.MOUNTING



CONTACT MATERIAL OPTIONS

Coding	Contact Material	Terminal Plating	Rating	Agency Approvals
Q	Silver ¹	Silver plated ¹	5Amps @ 125VAC or 28VDC 2Amps @ 250VAC	
P		Tin plated ^{5/7}		
R	Gold ²	Gold plated ⁴	0.4VA max @ 20V max (AC or DC)	
K		Tin plated ^{5/6}		
G	Silver ¹	Gold over silver ³	5Amps @ 125VAC or 28VDC 2Amps @ 250VAC	

1. Movable Contact / Terminals: Copper alloy, silver plated.
2. Movable Contact: Copper alloy with gold plated over nickel plated.
3. Terminals: Silver plated with outer layer in gold plating.
4. Terminals: Copper alloy, with gold plated over nickel plated.
5. Outer Terminals: Copper alloy with pure tin plated.
6. Terminal Contact: Gold plated over nickel plated.
7. Terminal Contact: Palladium nickel alloy (or Silver) plated.

* P, K is not available with M1 and M3 terminals

* 6Amps (Movable Contact: coin silver, silver plated) available with model ON-NONE-ON without UL approval