

## SPECIFICATIONS:

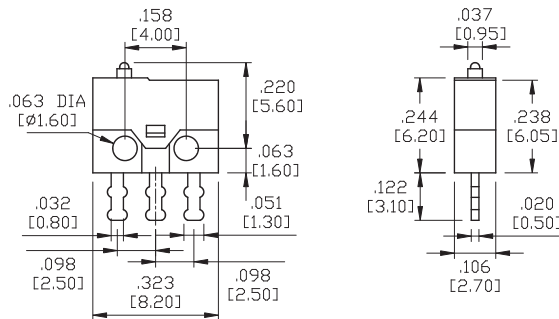
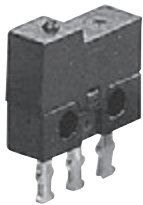
RATING: 30VDC 500mA.  
 OPERATING FORCE: 50gf max.  
 LIFE: 100,000 cycles min.  
 CONTACT RESISTANCE: 100m-ohms max (initial).  
 INSULATION RESISTANCE: 100M-ohms min (500VDC).  
 DIELECTRIC STRENGTH: 250VAC 1 min.  
 OPERATING TEMPERATURE: -15°C to +70°C.  
 AMBIENT HUMIDITY: 35%~85%RH.

## MATERIALS:

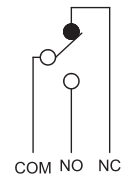
BODY: PBT.  
 COVER: POM.  
 LEVER: POM or SUS.  
 BUTTON: POM.  
 CONTACT: BeCu+Ag.  
 TERMINAL: Silver+Ag.

Specifications and Dimensions subject to change

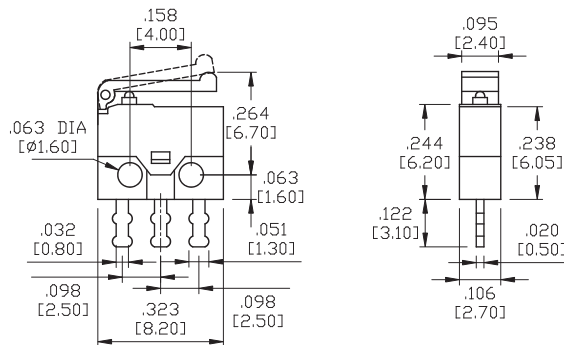
### SSM-00



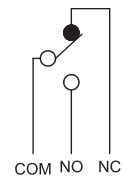
### SCHEMATIC



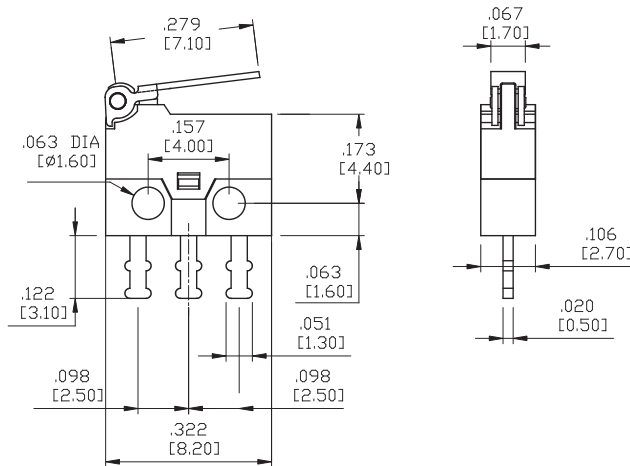
### SSM-01



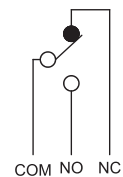
### SCHEMATIC



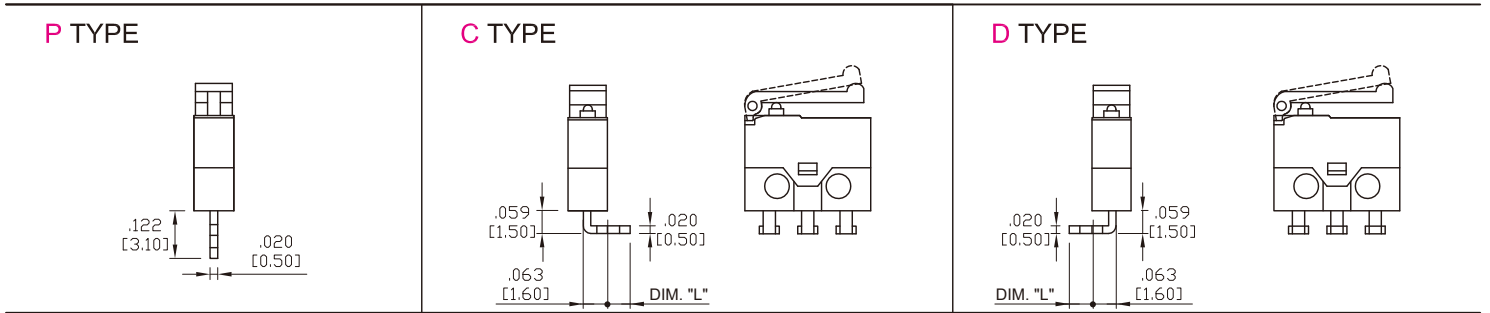
### SSM-02



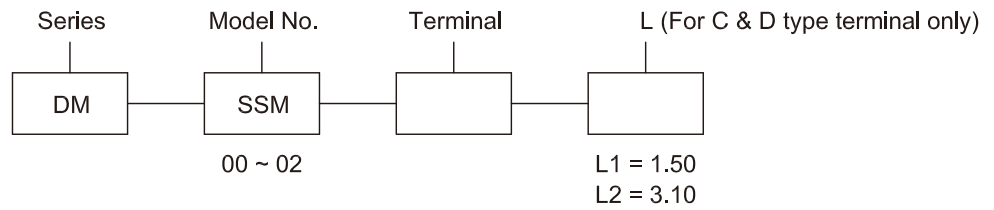
### SCHEMATIC



TERMINATION OPTIONS



HOW TO ORDER



Toggle

Rocker

Slide

Pushbutton

AV

Rotary

Tact

Touch Key

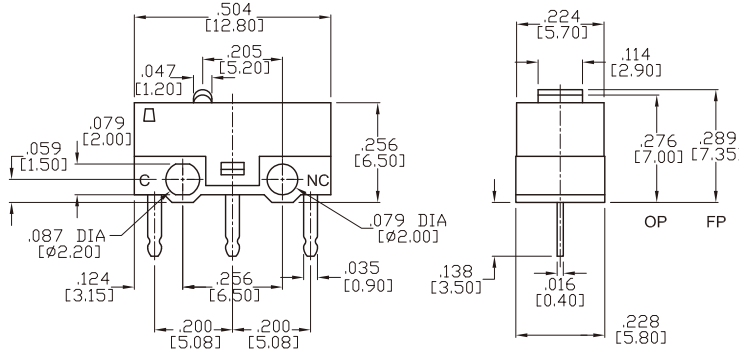
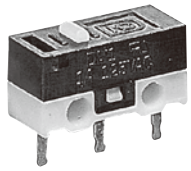
Miscellaneous

## SPECIFICATIONS:

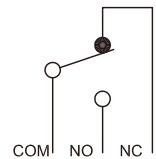
RATING: AC125V 1A, (OPTIONAL AC125V @ 3A, 0.1A @ 250VAC).  
 INSULATION RESISTANCE: >100M-ohms DC500V.  
 DIELECTRIC STRENGTH: AC500V 1 min.  
 CONTACT RESISTANCE: <50m-ohms.  
 SOLDERING TEMPERATURE: 225°C max. 5 sec.  
 MECHANICAL LIFE: 1,000,000 cycles.  
 ELECTRICAL LIFE: 30,000 cycles.  
 OPERATING TEMPERATURE: -25°C to +65°C.  
 AMBIENT HUMIDITY: <85% RH.

Specifications and Dimensions subject to change

DM-00

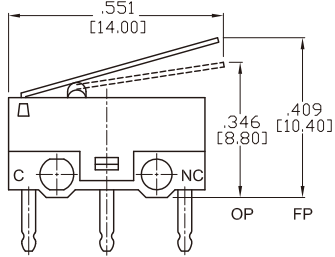


SCHEMATIC

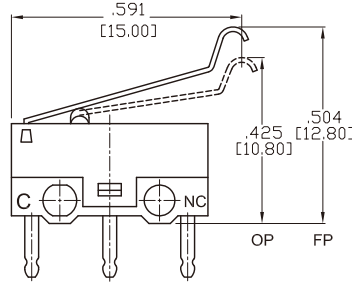


## LEVER OPTIONS

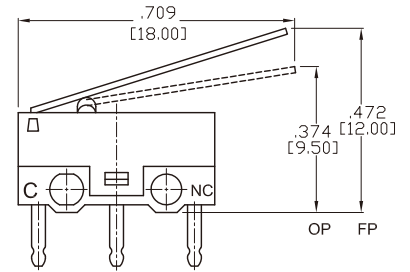
DM-01



DM-02

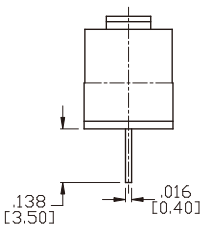


DM-03

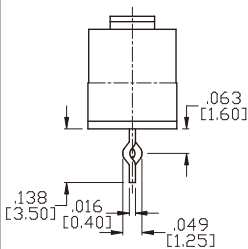


## TERMINATION OPTIONS

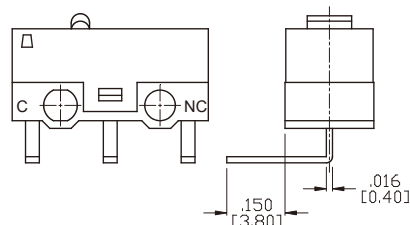
P TYPE



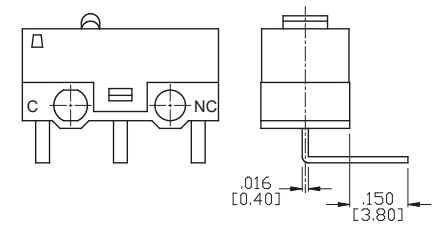
T TYPE



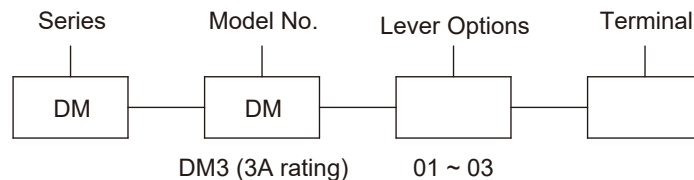
C TYPE



D TYPE



## HOW TO ORDER

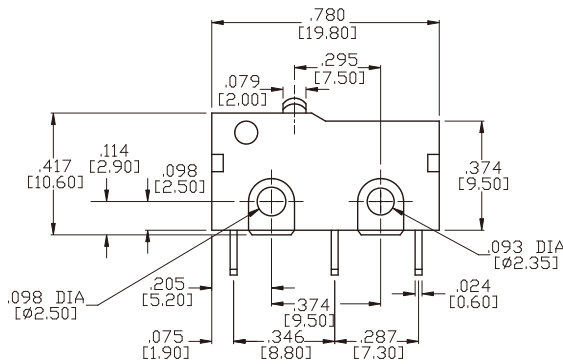
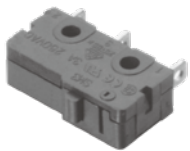


SPECIFICATIONS:

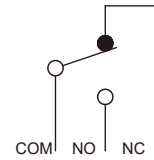
RATING: AC 125V 3A (OPTIONAL AC125V @ 5A).  
 INSULATION RESISTANCE: >100M-ohms DC500V.  
 DIELECTRIC STRENGTH: AC1000V 1 min.  
 CONTACT RESISTANCE: <50m-ohms.  
 SOLDERING TEMPERATURE: 225°C max. 5 sec.  
 MECHANICAL LIFE: 1,000,000 cycles.  
 ELECTRICAL LIFE: 200,000 cycles.  
 OPERATING TEMPERATURE: -25°C to +80°C.  
 AMBIENT HUMIDITY: <85% RH.

Specifications and Dimensions subject to change

SM-00



SCHEMATIC



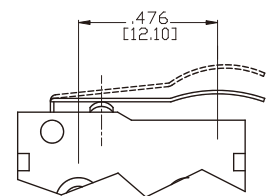
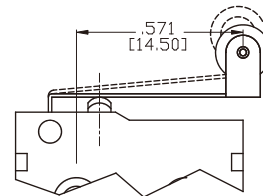
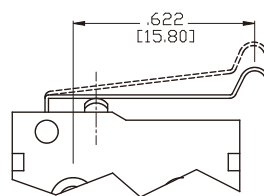
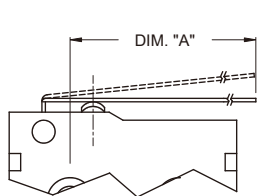
LEVER OPTIONS

SM-04

SM-05

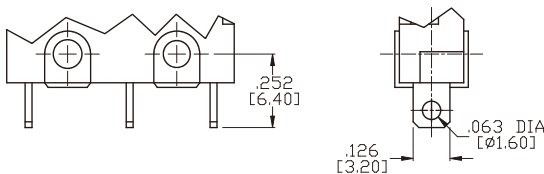
SM-06

Model No.	DIM. "A"
SM-01	.571 [14.50]
SM-02	.650 [16.50]
SM-03	.890 [22.60]
SM-07	1.685 [42.80]

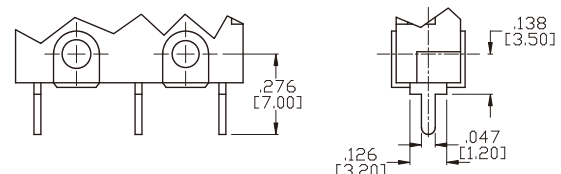


TERMINATION OPTIONS

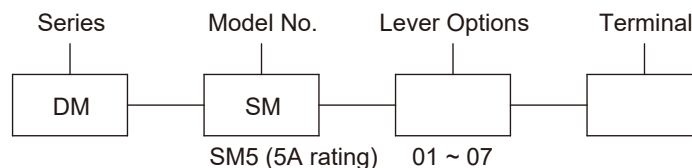
M1



M2



HOW TO ORDER

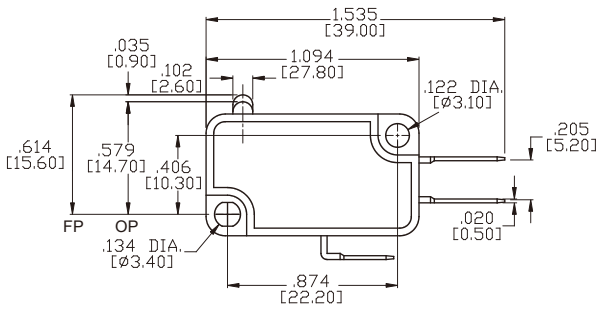


## SPECIFICATIONS:

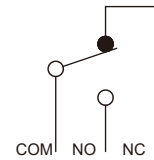
RATING: AC125V 3A (OPTIONAL 5A @ 125VAC, 0.1A @ 250VAC).  
 INSULATION RESISTANCE: >100M-ohms DC500V.  
 DIELECTRIC STRENGTH: AC1000V 1 min.  
 CONTACT RESISTANCE: <100m-ohms.  
 SOLDERING TEMPERATURE: 225°C max. 5 sec.  
 MECHANICAL LIFE: 5,000,000 cycles.  
 ELECTRICAL LIFE: 200,000 cycles.  
 OPERATING TEMPERATURE: -25°C to +80°C.  
 AMBIENT HUMIDITY: <85% RH.

Specifications and Dimensions subject to change

### VM-00



### SCHEMATIC



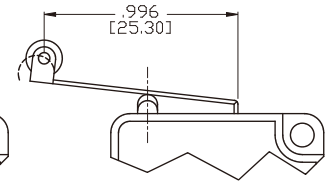
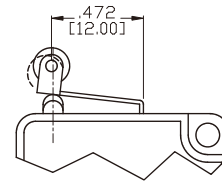
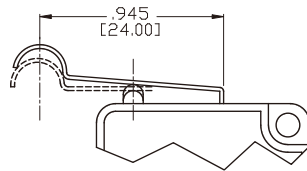
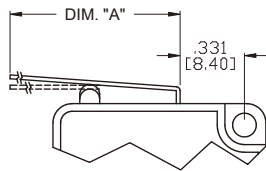
## LEVER OPTIONS

### VM-04

### VM-05

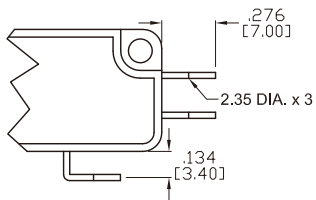
### VM-06

Model No.	DIM. "A"
VM-01	.531 [13.50]
VM-02	1.071 [27.20]
VM-03	2.012 [51.10]

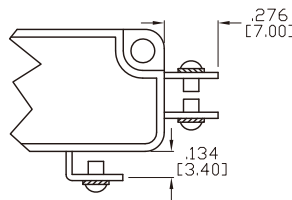


## TERMINATION OPTIONS

### A TYPE

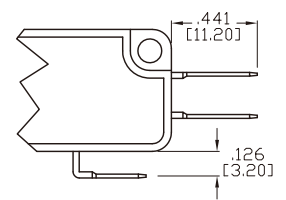


### B TYPE



### C TYPE

(QUICK CONNECT .187 series)



## HOW TO ORDER

